

# 3 WINDOW DETAIL

ALPOLIC NC  
w/ sarking

A

B

C

D

E

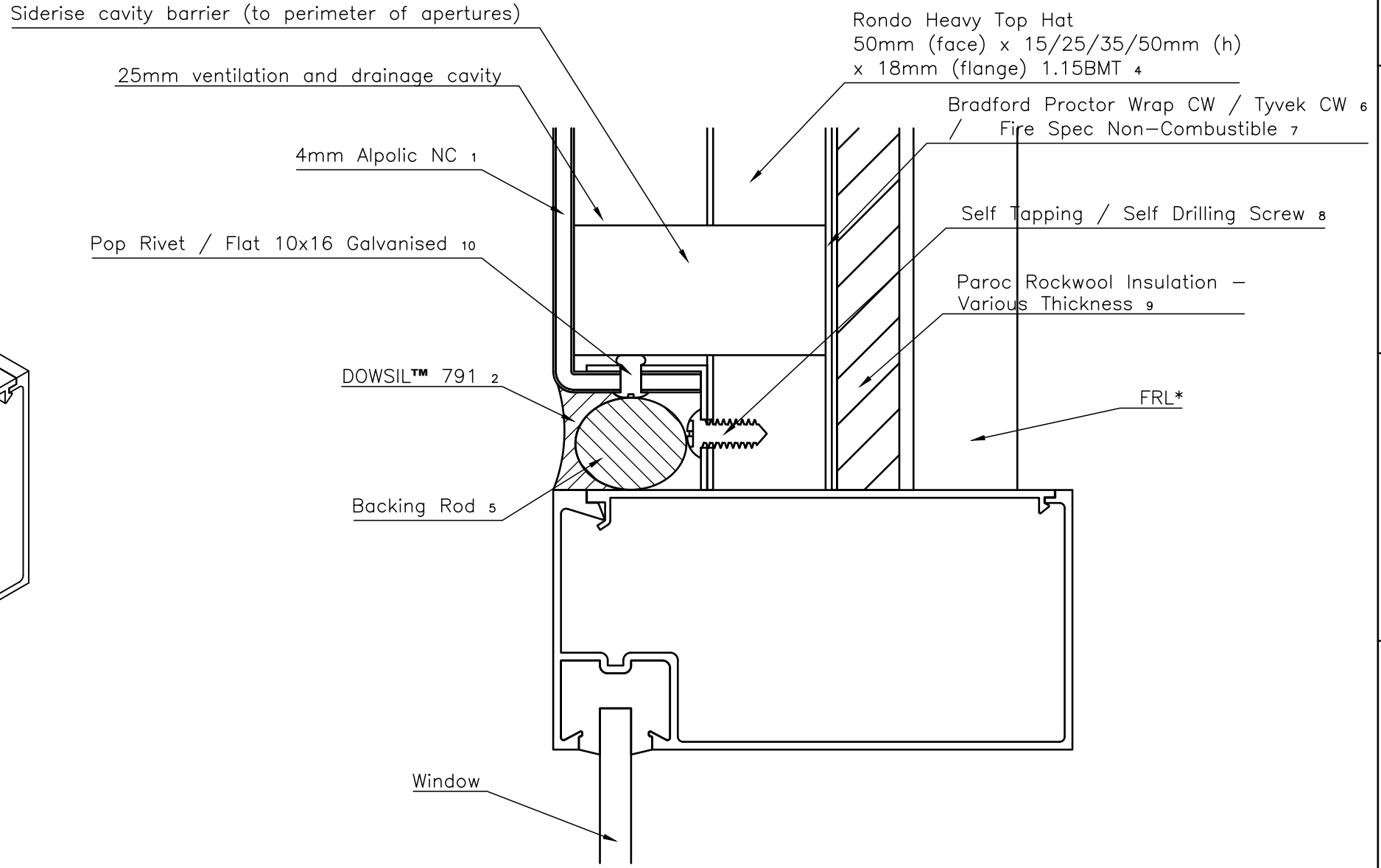
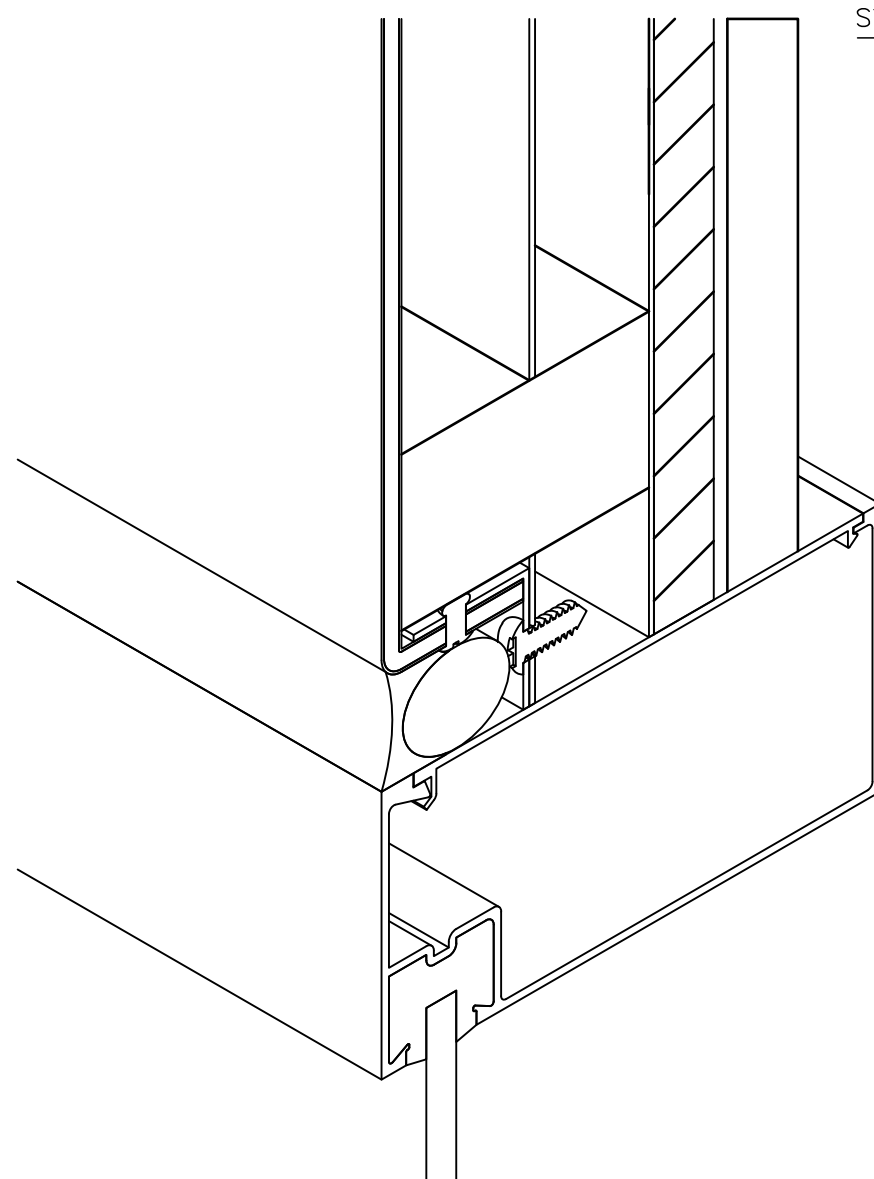
A

B

C

D

E



**Tyvek**

**SIDERISE**  
integrity in all we do

**TRAFALGAR**  
**FIRE**

\*FRL to be nominated by engineer.

Engineer to review & approve for project.  
Drawings do not supercede engineering  
detail.

**Network**  
Architectural

**MITSUBISHI**  
**ALPOLIC**  
FIRE SAFE CLADDING YOU CAN TRUST

**RONDO**

**OWENS**  
**CORNING**  
**PAROC**

<b>CONCEALED CASSETTE SYSTEM</b>	Project Alpolic Installation Drawings
	Drawing Title Window Detail
	Drafting by Network Architectural

1 2 3 4 5 6 7 8