



# **MITSUBISHI ALPOLIC NC RECOMMENDED INSTALLATION GUIDE**

Rev. 1.7

Contents

<b>Parts List</b>	<b>1</b>
<b>Alpolic NC w/ Sarking</b>	<b>2</b>
1 Vertical Joint Detail	2
2 Horizontal Joint Detail	3
3 Window Detail	4
4 Square Column Detail	5
5 Round Column Detail	6
6 Soffit Detail	7
7 Parapet / Capping Detail	8
8 Base Detail	9
9 Edge Detail	10
<b>Alpolic NC w/ RAB</b>	<b>11</b>
1 Vertical Joint Detail	11
2 Horizontal Joint Detail	12
3 Window Detail	13
4 Square Column Detail	14
5 Round Column Detail	15
6 Soffit Detail	16
7 Parapet / Capping Detail	17
8 Base Detail	18
9 Edge Detail	19

## Parts List

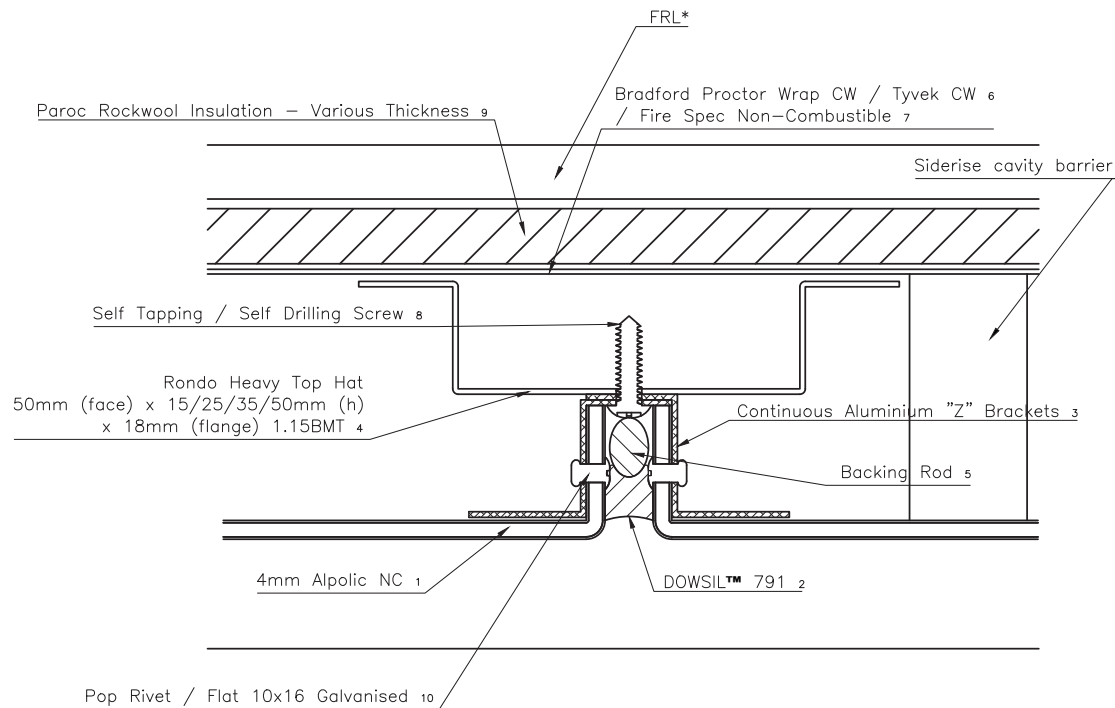
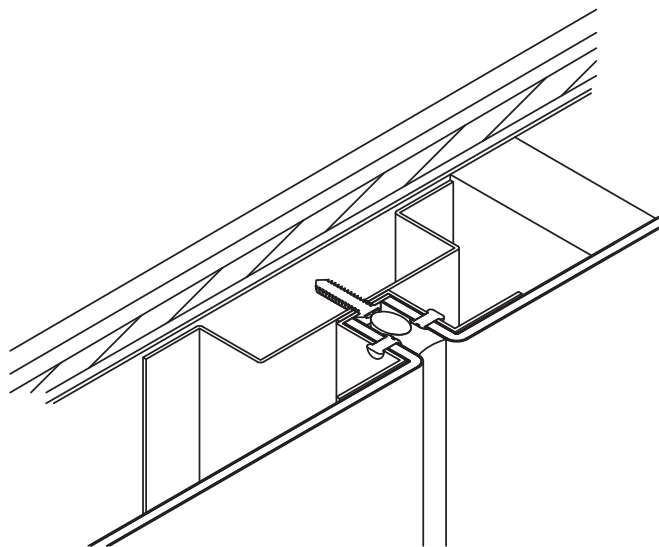
Ref.	Product	Network Building Supplies SKUs	
1	Mitsubishi Alpolic NC Panels	Varies	
2	DOWSIL™ 791	Varies	
3	Continuous Aluminium Z Brackets	Low Profile	ZANGLE23101.6
		High Profile	ZANGLE40251.6
4	Rondo Heavy Top Hat 50mm (face) x 15/25/35/50mm (h) x 18mm (flange) 1.15BMT	50mmx15mm	RONH51536
		50mmx25mm	RONH52536
		50mmx35mm	RONH3536
		50mmx50mm	RONH55036
5	16mm Open Cell Backing Rod	BROC16150	
6	Bradford Proctor Wrap CW / Tyvek CW	BRAD114175 / Varies	
7	Bradford Thermoseal Fire Spec Non-Combustible	BRAD164674	
8	Self Tapping / Self Drilling Screw	WSC31022	
9	Paroc Rockwool Insulation	60kg 50mm	INSR8532509
		80kg 25mm	INSR8545585
		80kg 50mm	INSR8537127
		120kg 50mm	INSR8513977
		60kg R2.5 90mm	INSR2.5600ROCK
10	Flat 1016	FLAT1016	
11	3M RP45 Double Sided Tape	3M-VHBRP45-12	
13	CSR Rigid Air Barrier 6mm	170076	
14	Trafalgar Siderise RH25 open state cavity barrier	Varies	
15	Trafalgar Siderise RV cavity barrier	Varies	

CEMINTEL®

RONDO®

ALPOLIC NC  
w/ sarking

# 1 VERTICAL JOINT DETAIL



**Tyvek®**



Network  
Architectural



**MITSUBISHI  
ALPOLIC™**  
FIRE SAFE CLADDING YOU CAN TRUST

**RONDO®**



**PAROC®**

\*FRL to be nominated by engineer.

Engineer to review & approve for project.  
Drawings do not supercede engineering  
detail.

**CONCEALED  
CASSETTE  
SYSTEM**

Project  
Alpolic Installation Drawings

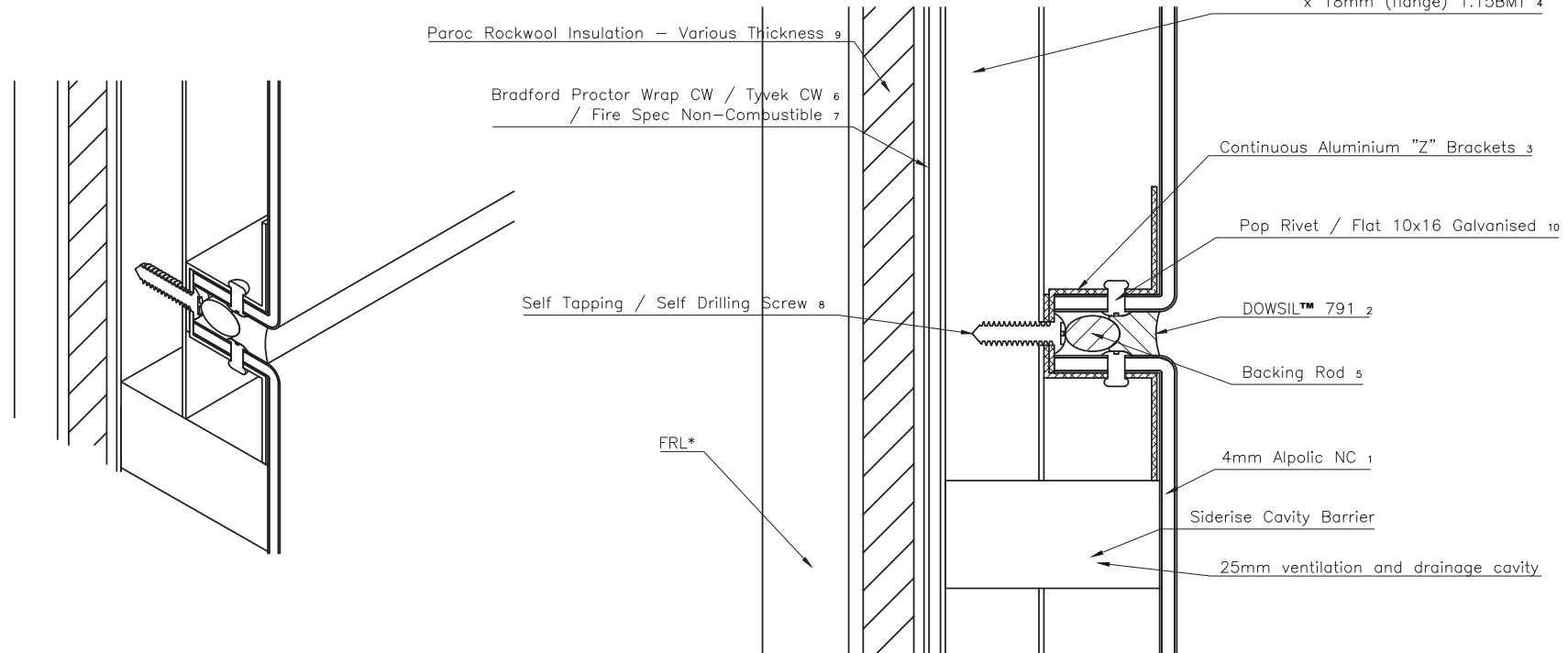
Drawing Title  
Vertical Joint Detail

Drafting by  
Network Architectural

ALPOLIC NC

w/ sarking

## 2 HORIZONTAL JOINT DETAIL



**Tyvek**

**SIDERISE**  
integrity in all we do

**TRAFALGAR**  
**FIRE**

\*FRL to be nominated by engineer.

Engineer to review & approve for project.  
Drawings do not supercede engineering  
detail.



Network  
Architectural



**MITSUBISHI**  
**ALPOLIC**  
FIRE SAFE CLADDING YOU CAN TRUST

**RONDO**



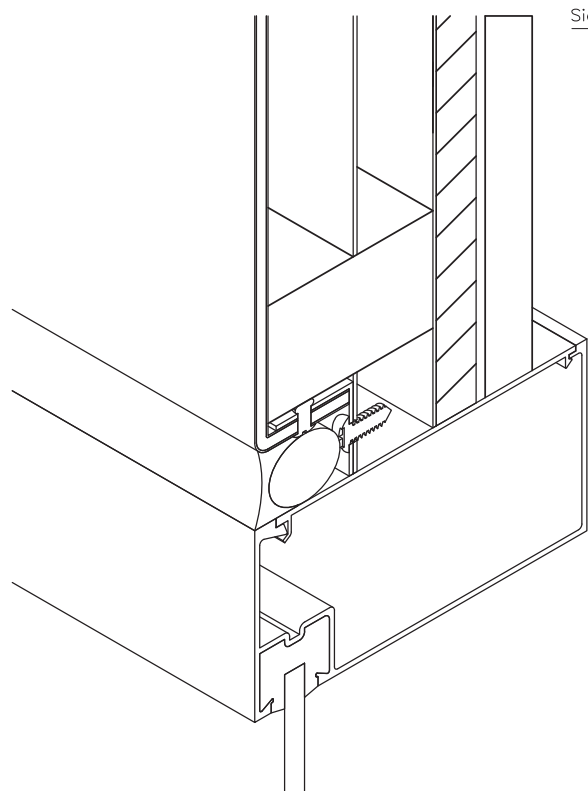
**PAROC**

**CONCEALED  
CASSETTE  
SYSTEM**

Project	Alpolic Installation Drawings
Drawing Title	Horizontal Joint Detail
Drafting by	Network Architectural

# ALPOLIC NC w/ sarking

## 3 WINDOW DETAIL



Siderise cavity barrier (to perimeter of apertures)

25mm ventilation and drainage cavity

4mm AlpoliC NC 1

Pop Rivet / Flat 10x16 Galvanised 10

DOWSIL™ 791 2

Backing Rod 5

Window

Rondo Heavy Top Hat  
50mm (face) x 15/25/35/50mm (h)  
x 18mm (flange) 1.15BMT 4

Bradford Proctor Wrap CW / Tyvek CW 6  
/ Fire Spec Non-Combustible 7

Self Tapping / Self Drilling Screw 8

Paroc Rockwool Insulation –  
Various Thickness 9

FRL\*



**Tyvek**

**SIDERISE**  
integrity in all we do

**TRAFALGAR**  
**FIRE**

\*FRL to be nominated by engineer.

Engineer to review & approve for project.  
Drawings do not supercede engineering  
detail.



**Network**  
Architectural



**MITSUBISHI**  
**ALPOLIC**  
FIRE SAFE CLADDING YOU CAN TRUST

**RONDO**



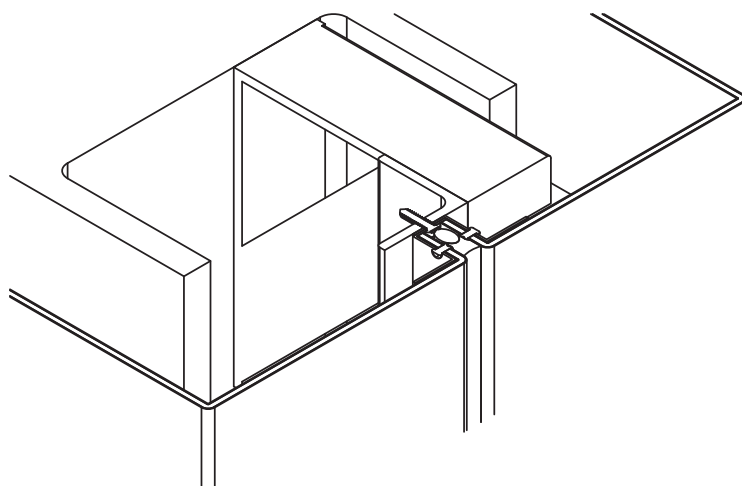
**PAROC**

**CONCEALED  
CASSETTE  
SYSTEM**

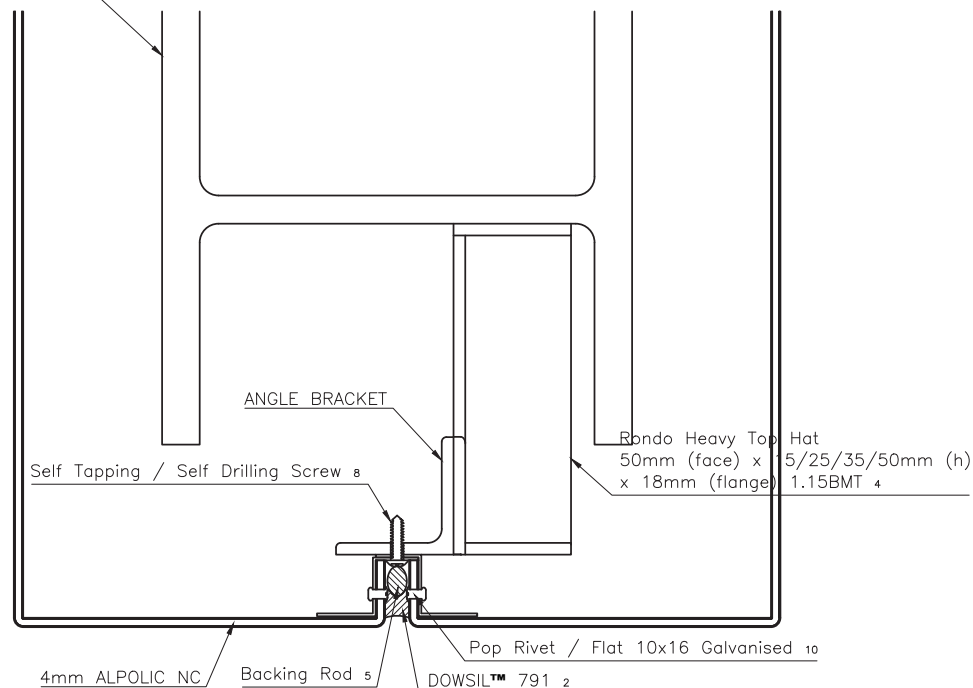
Project	AlpoliC Installation Drawings
Drawing Title	Window Detail
Drafting by	Network Architectural

ALPOLIC NC

# 4 SQUARE COLUMN DETAIL



I-Beam Column



Network  
Architectural



MITSUBISHI  
ALPOLIC™  
FIRE SAFE CLADDING YOU CAN TRUST

RONDO®

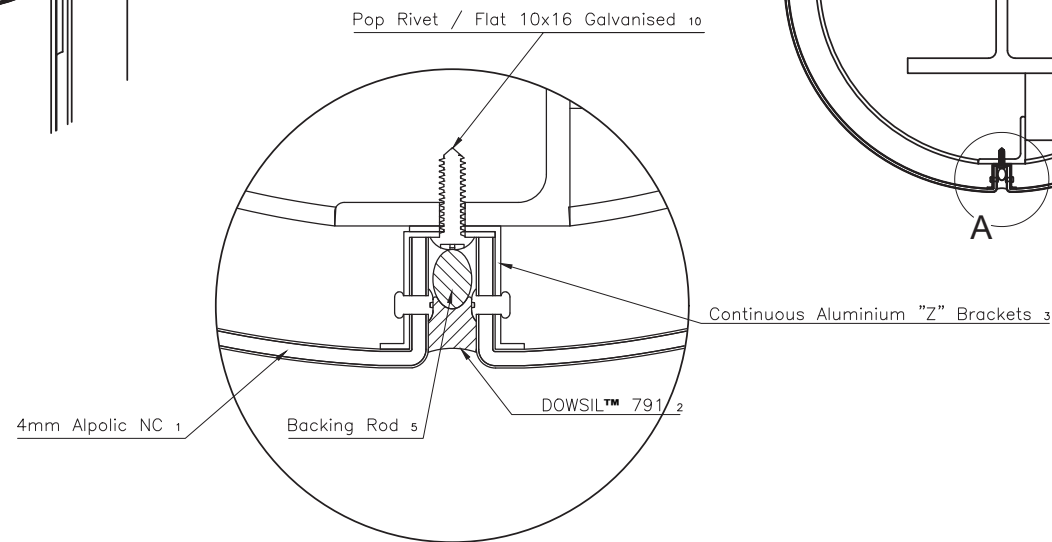
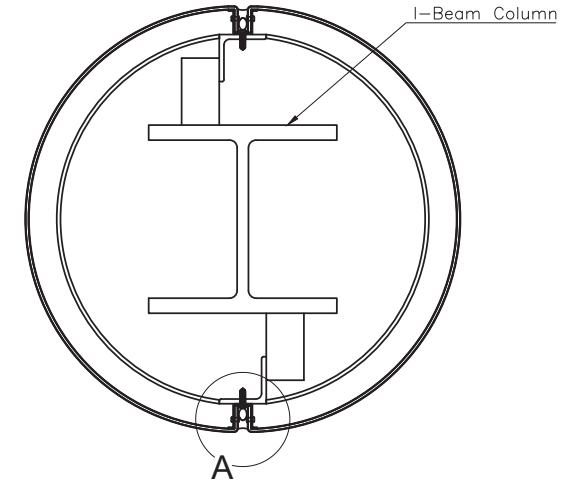
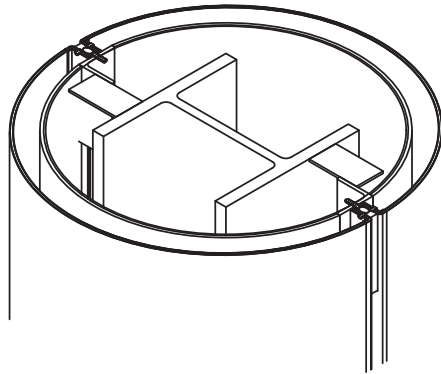
Engineer to review & approve for project.  
Drawings do not supercede engineering  
detail.

CONCEALED  
CASSETTE  
SYSTEM

Project	Alpoli Installation Drawings
Drawing Title	Square Column Detail
Drafting by	Network Architectural

ALPOLIC NC

# 5 ROUND COLUMN DETAIL



DETAIL-A



Engineer to review & approve for project.  
Drawings do not supercede engineering  
detail.

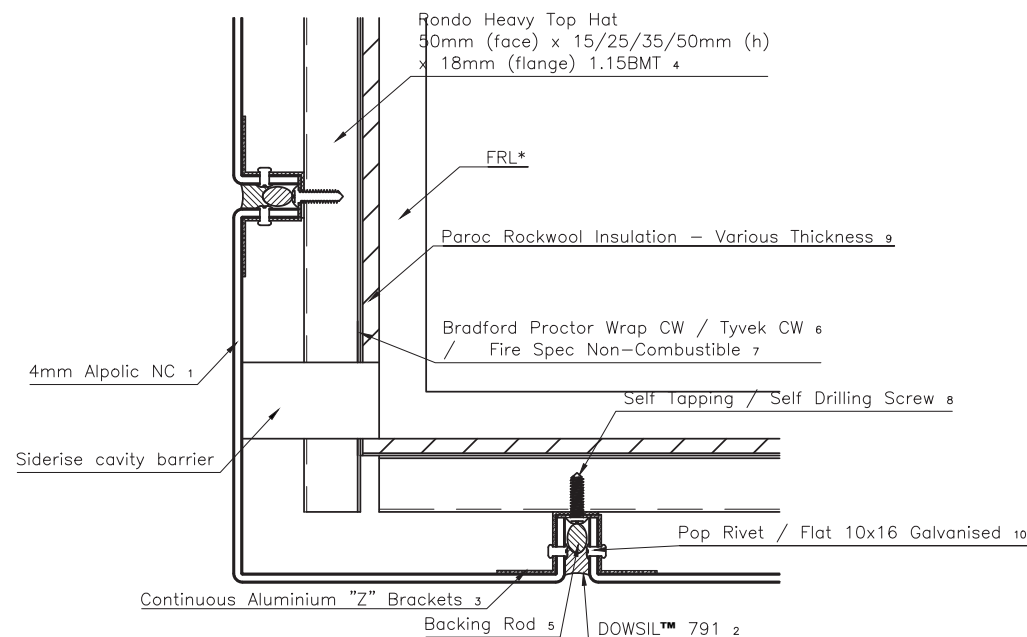
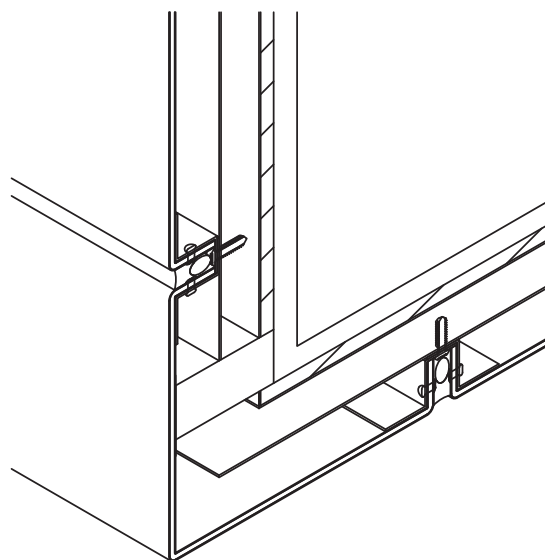
**CONCEALED  
CASSETTE  
SYSTEM**

Project	Alpolic Installation Drawings
Drawing Title	Round Column Detail
Drafting by	Network Architectural



ALPOLIC NC  
w/ sarking

# 6 SOFFIT DETAIL



\*FRL to be nominated by engineer.

Engineer to review & approve for project.  
Drawings do not supercede engineering  
detail.



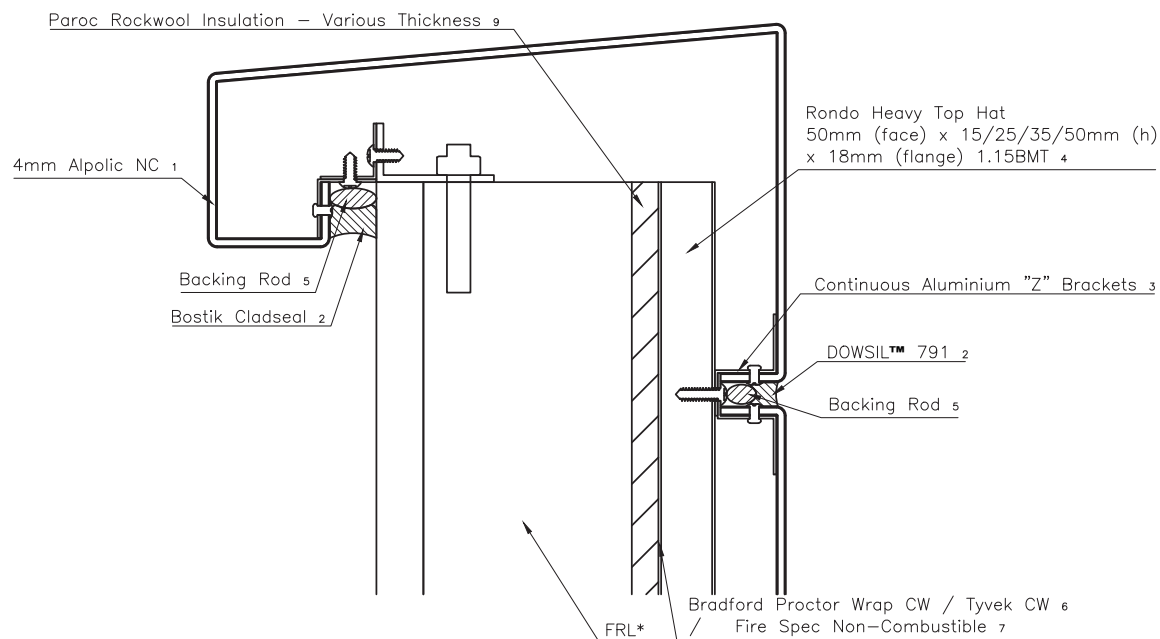
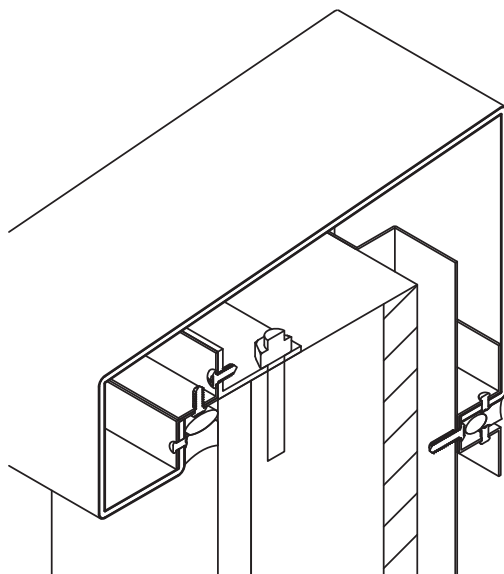
CONCEALED  
CASSETTE  
SYSTEM

Project	Alpolic Installation Drawings
Drawing Title	Soffit Detail
Drafting by	Network Architectural

ALPOLIC NC

w/ sarking

7 PARAPET/CAPPING DETAIL



\*FRL to be nominated by engineer.

Engineer to review & approve for project.  
Drawings do not supercede engineering detail.



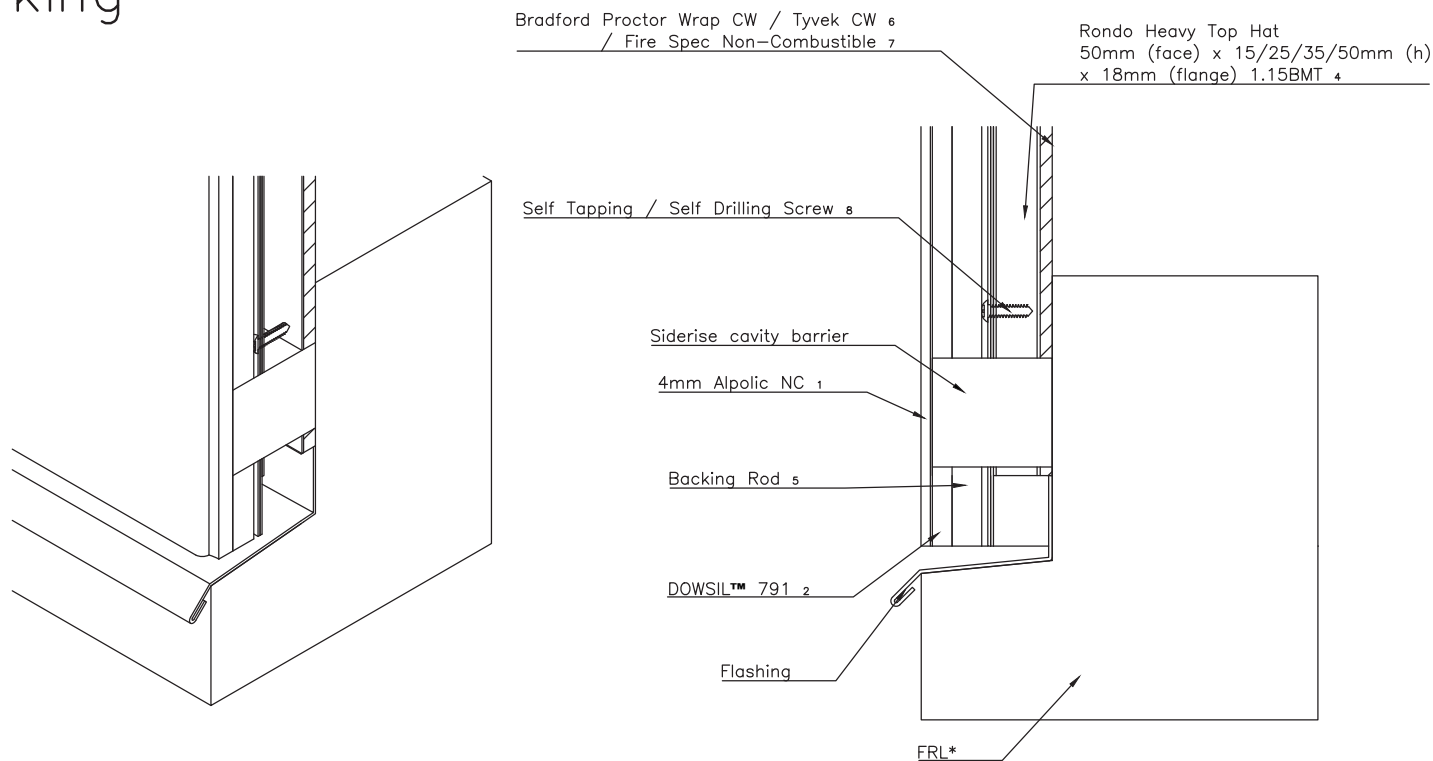
CONCEALED  
CASSETTE  
SYSTEM

Project	Alpoli Installation Drawings
Drawing Title	Parapet/Capping Detail
Drafting by	Network Architectural

ALPOLIC NC

w/ sarking

# 8 BASE DETAIL



\*FRL to be nominated by engineer.

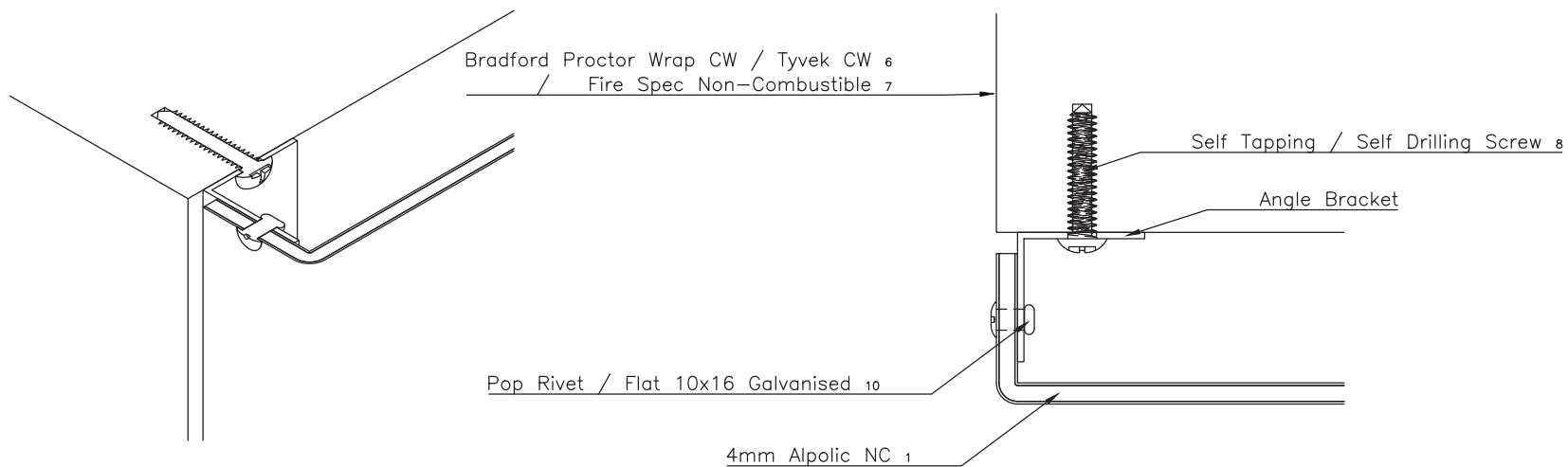
Engineer to review & approve for project.  
Drawings do not supercede engineering detail.

**CONCEALED  
CASSETTE  
SYSTEM**

Project	Alpolic Installation Drawings
Drawing Title	Base Detail
Drafting by	Network Architectural

ALPOLIC NC

9 EDGE DETAIL



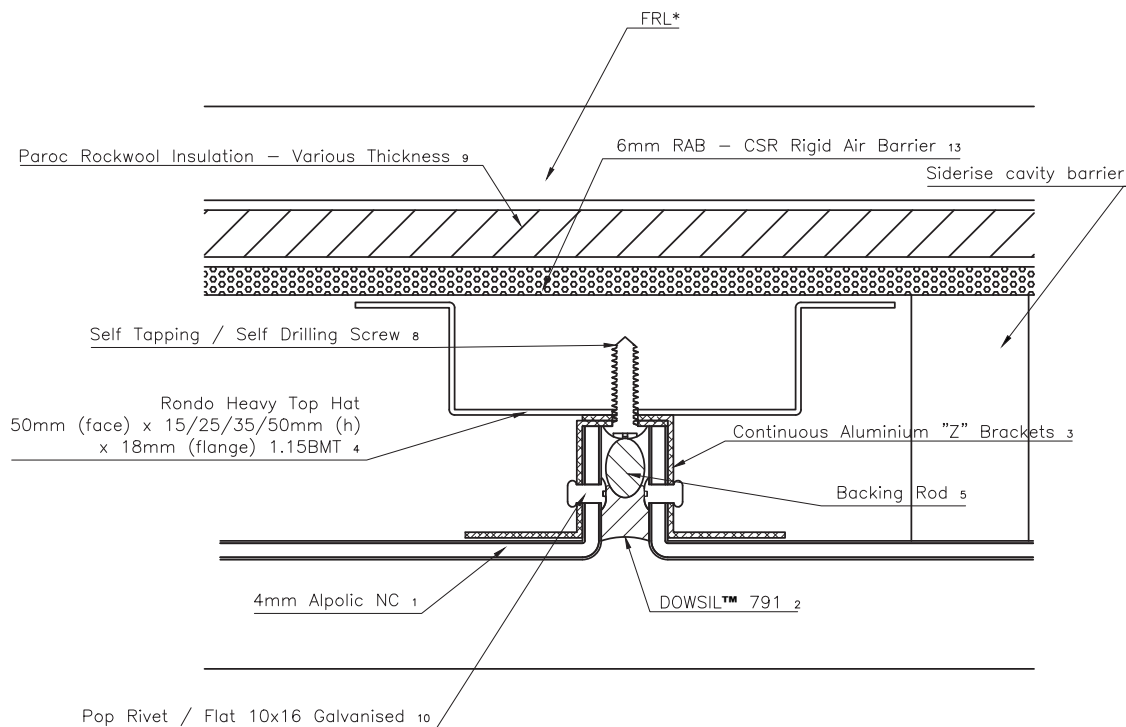
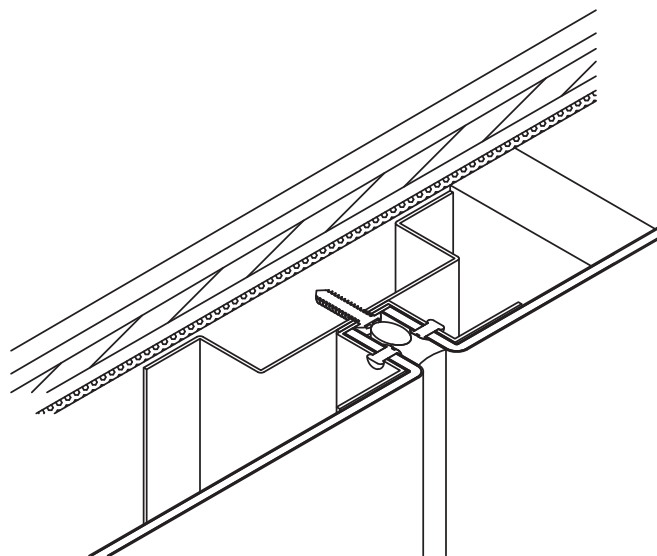
Engineer to review & approve for project.  
Drawings do not supercede engineering  
detail.

CONCEALED  
CASSETTE  
SYSTEM

Project	Alpolic Installation Drawings
Drawing Title	Edge Detail
Drafting by	Network Architectural

ALPOLIC NC  
RAB

# 1 VERTICAL JOINT DETAIL



\*FRL to be nominated by engineer.

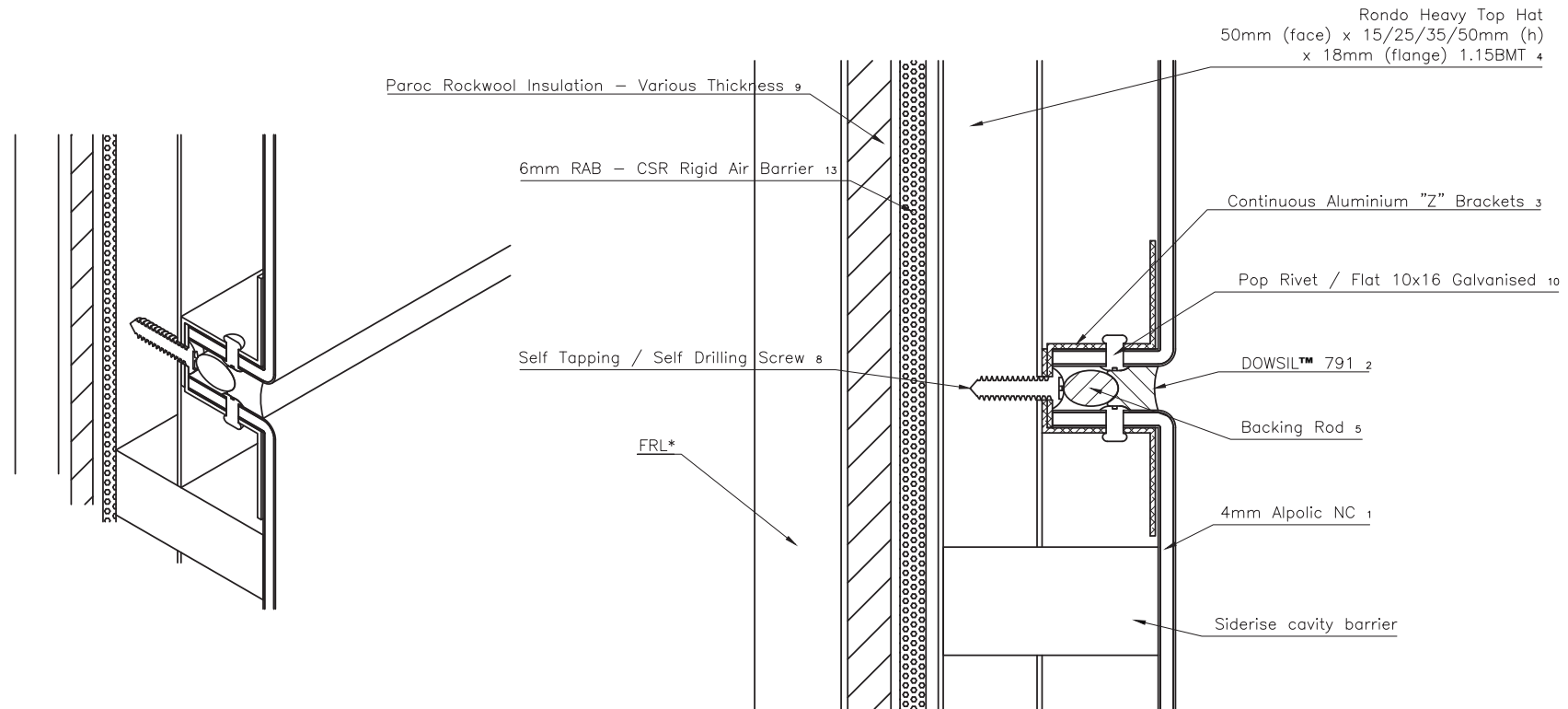
Engineer to review & approve for project.  
Drawings do not supercede engineering detail.

**CONCEALED  
CASSETTE  
SYSTEM**

Project	Alpolic Installation Drawings
Drawing Title	Vertical Joint Detail
Drafting by	Network Architectural

ALPOLIC NC  
RAB

## 2 HORIZONTAL JOINT DETAIL



\*FRL to be nominated by engineer.

Engineer to review & approve for project.  
Drawings do not supercede engineering detail.

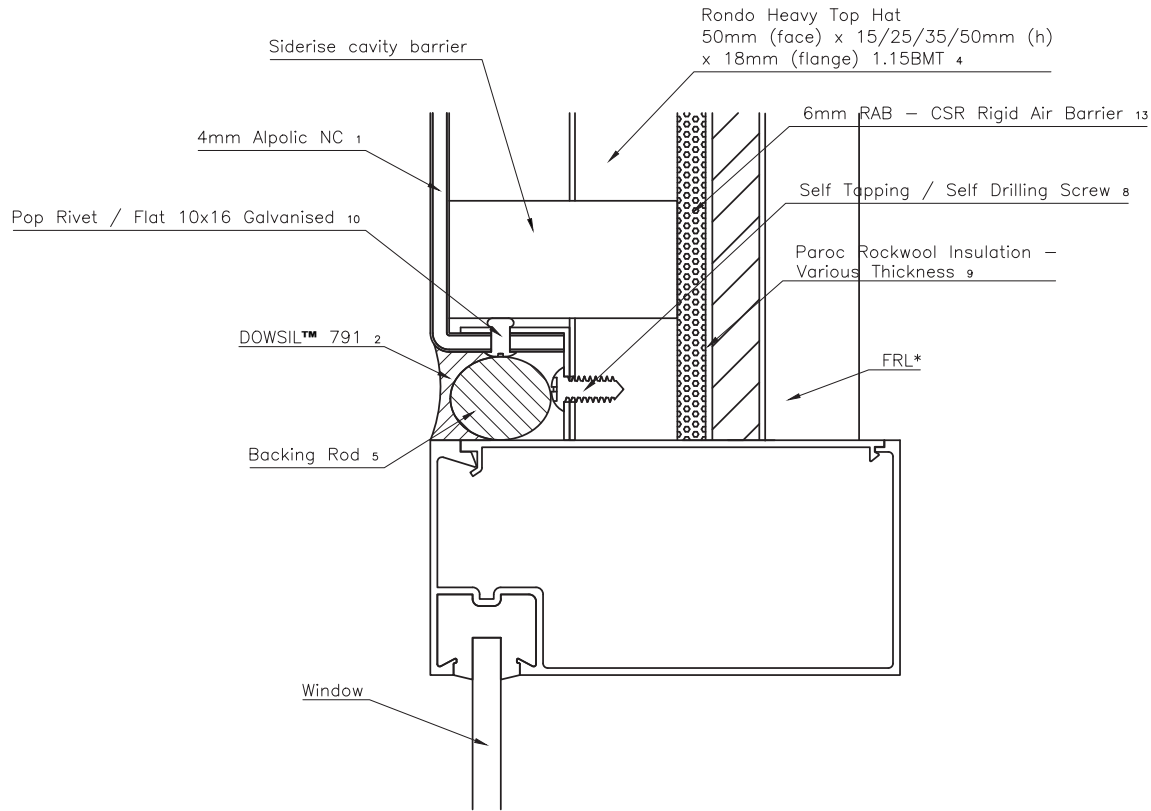
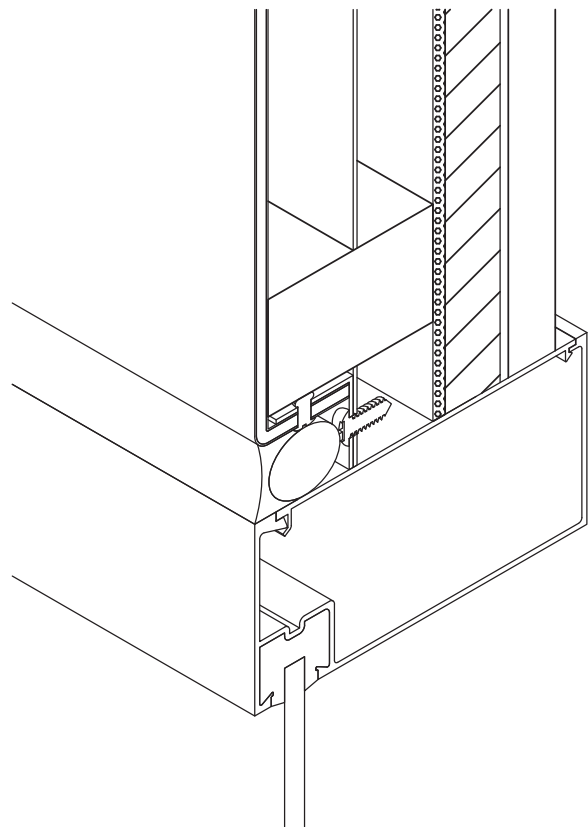


**CONCEALED  
CASSETTE  
SYSTEM**

Project	Alpolic Installation Drawings
Drawing Title	Horizontal Joint Detail
Drafting by	Network Architectural

ALPOLIC NC  
RAB

### 3 WINDOW DETAIL



**PAROC®**



**SIDERISE®**  
integrity in all we do



\*FRL to be nominated by engineer.

Engineer to review & approve for project.  
Drawings do not supercede engineering detail.



**Network  
Architectural**



**MITSUBISHI  
ALPOLIC™**  
FIRE SAFE CLADDING YOU CAN TRUST

**RONDO®**

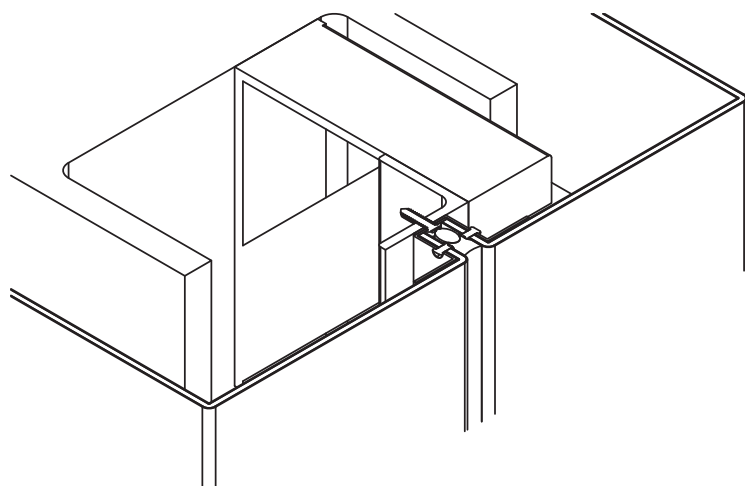
**CEMINTEL®**

**CONCEALED  
CASSETTE  
SYSTEM**

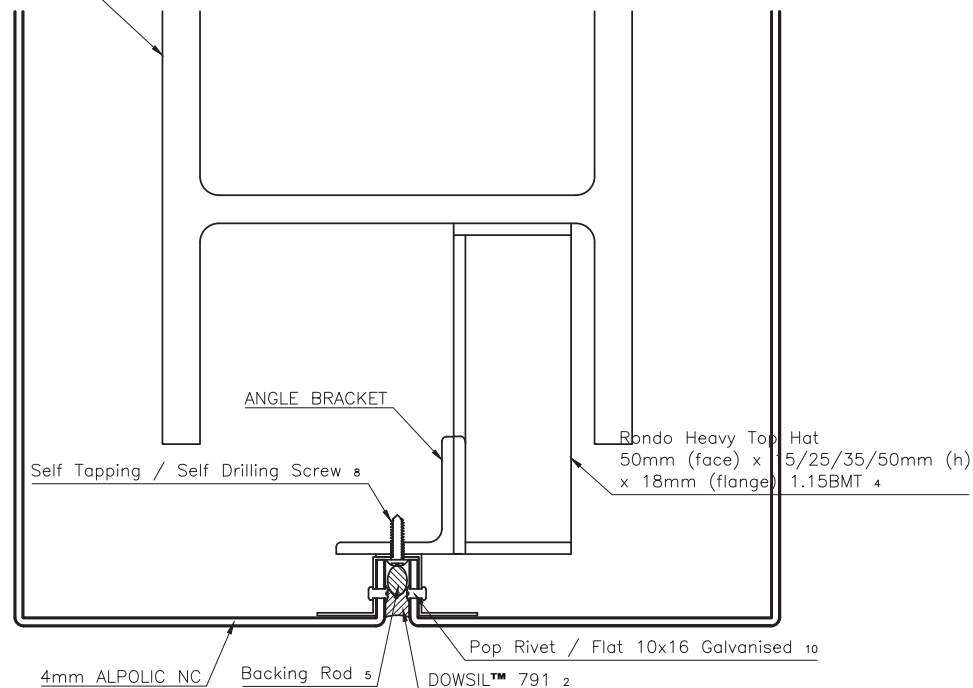
Project	Alpolic Installation Drawings
Drawing Title	Window Detail
Drafting by	Network Architectural

ALPOLIC NC  
RAB

# 4 SQUARE COLUMN DETAIL



I-Beam Column



Network  
Architectural



MITSUBISHI  
ALPOLIC™  
FIRE SAFE CLADDING YOU CAN TRUST

RONDO®

CEMINTEL®

Engineer to review & approve for project.  
Drawings do not supercede engineering  
detail.

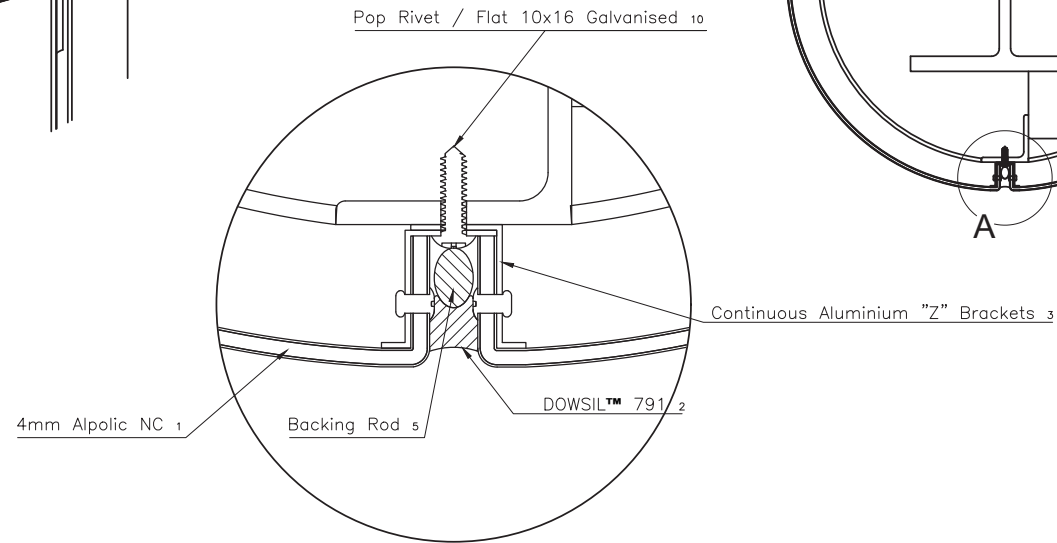
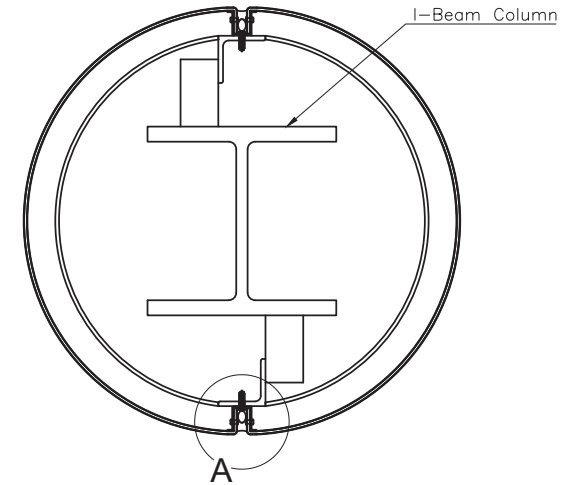
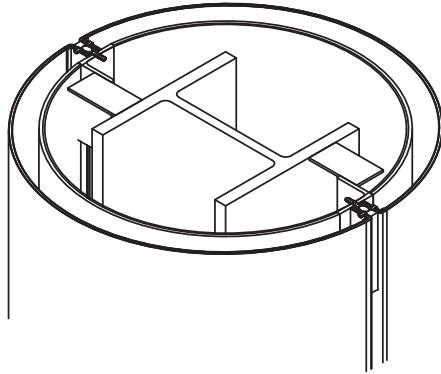
CONCEALED  
CASSETTE  
SYSTEM

Project	Alpoli Installation Drawings
Drawing Title	Square Column Detail
Drafting by	Network Architectural



ALPOLIC NC  
RAB

# 5 ROUND COLUMN DETAIL



DETAIL-A

Engineer to review & approve for project.  
Drawings do not supercede engineering  
detail.

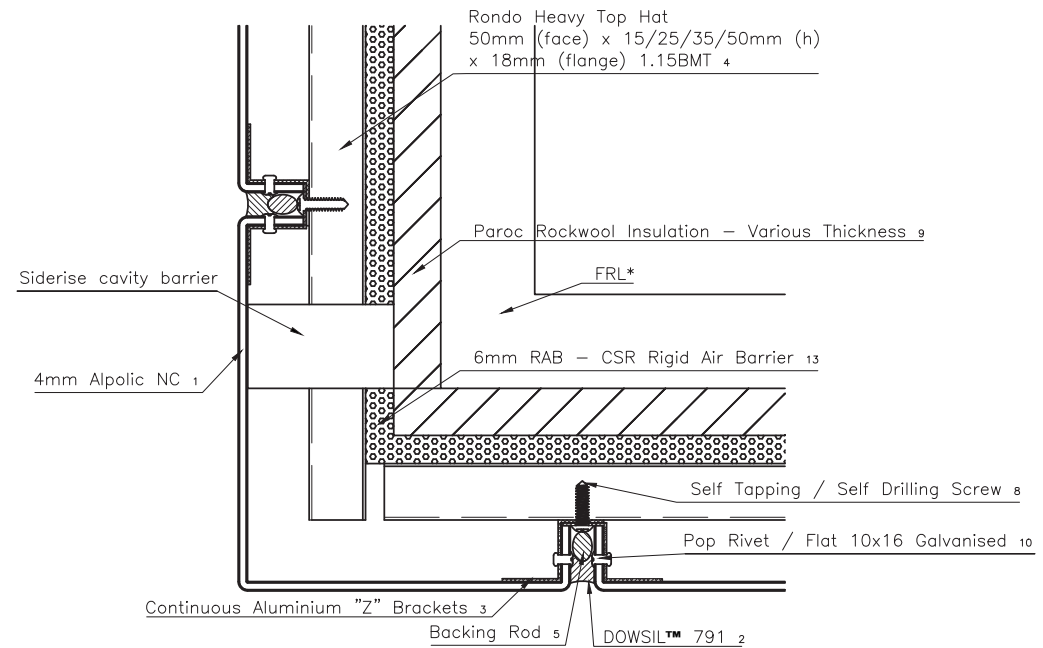
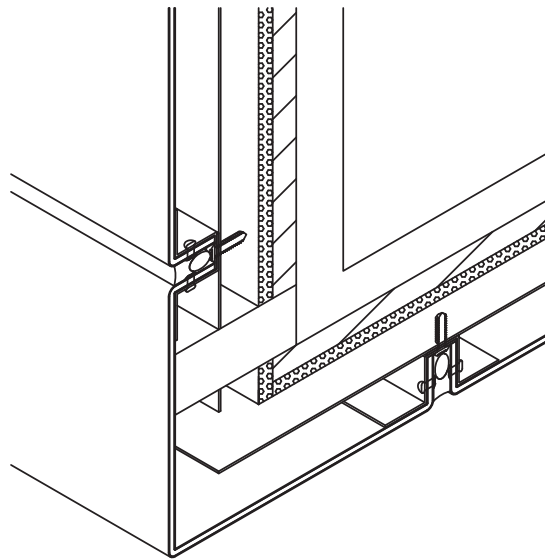


**CONCEALED  
CASSETTE  
SYSTEM**

Project	Alpolic Installation Drawings
Drawing Title	Round Column Detail
Drafting by	Network Architectural

ALPOLIC NC  
RAB

# 6 SOFFIT DETAIL



\*FRL to be nominated by engineer.

Engineer to review & approve for project.  
Drawings do not supercede engineering  
detail.

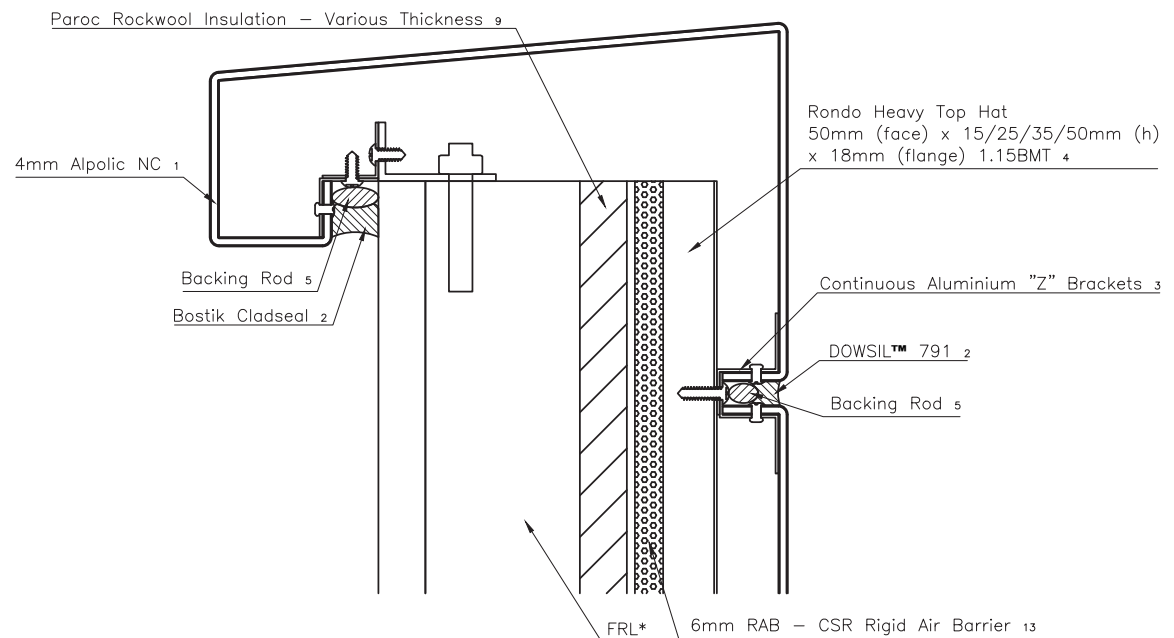
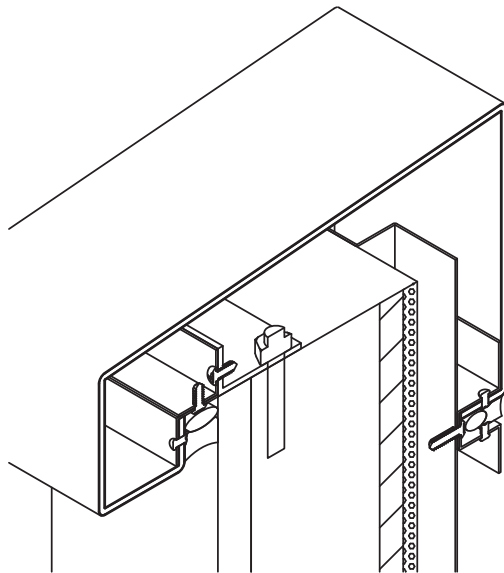


CONCEALED  
CASSETTE  
SYSTEM

Project	Alpolic Installation Drawings
Drawing Title	Soffit Detail
Drafting by	Network Architectural

ALPOLIC NC  
RAB

# 7 PARAPET/CAPPING DETAIL



\*FRL to be nominated by engineer.

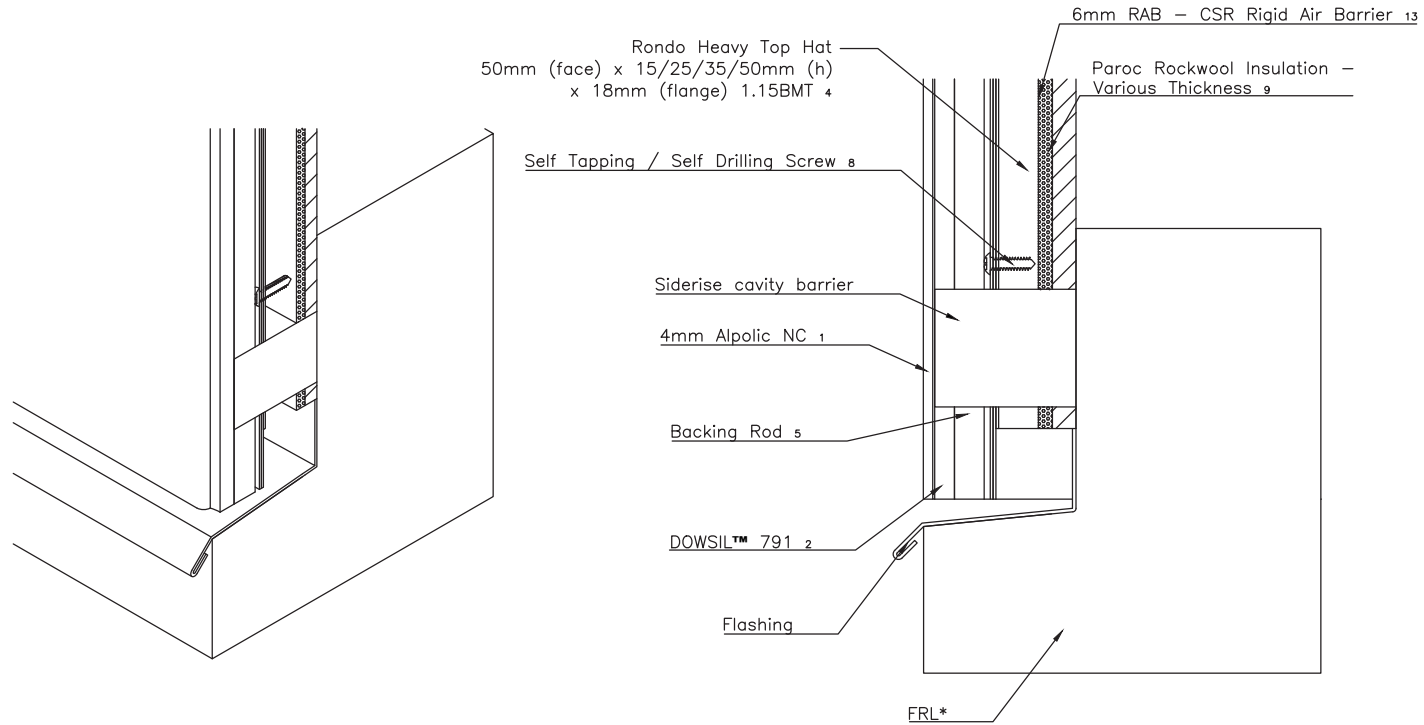
Engineer to review & approve for project.  
Drawings do not supercede engineering detail.

**CONCEALED  
CASSETTE  
SYSTEM**

Project	Alpolic Installation Drawings
Drawing Title	Parapet/Capping Detail
Drafting by	Network Architectural

ALPOLIC NC  
RAB

# 8 BASE DETAIL



\*FRL to be nominated by engineer.

Engineer to review & approve for project.  
Drawings do not supercede engineering detail.

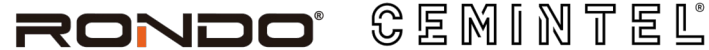
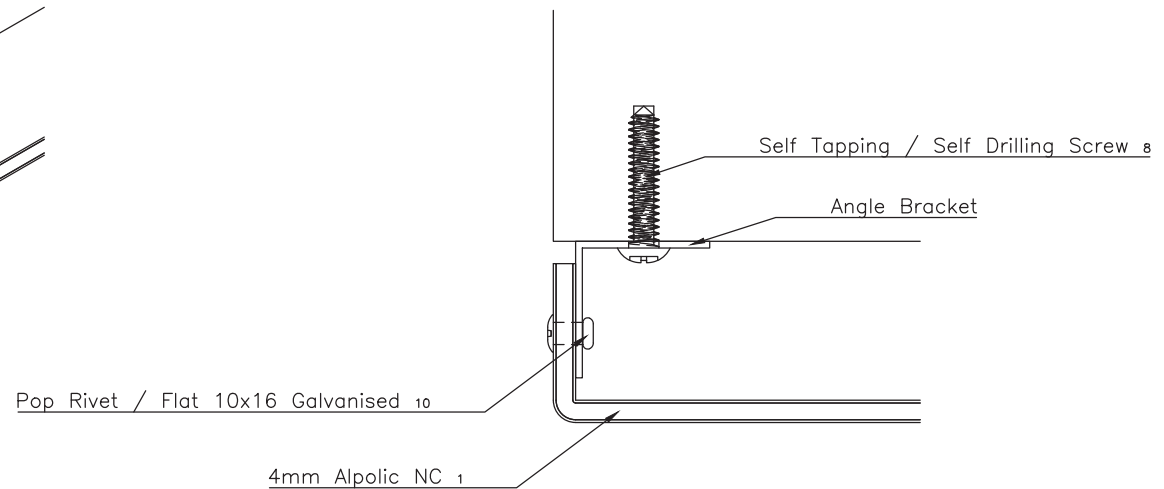
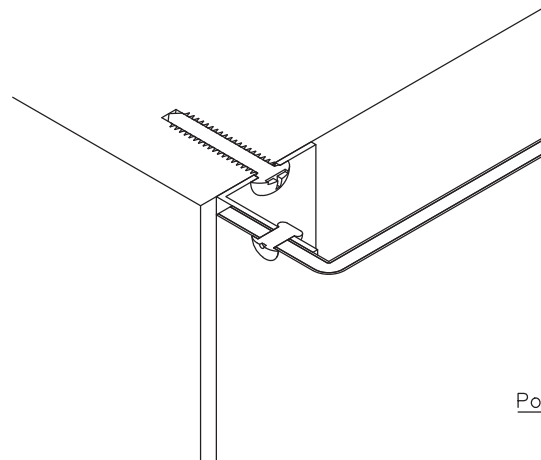


**CONCEALED  
CASSETTE  
SYSTEM**

Project	Alpolic Installation Drawings
Drawing Title	Base Detail
Drafting by	Network Architectural

ALPOLIC NC  
RAB

9 EDGE DETAIL



Engineer to review & approve for project.  
Drawings do not supercede engineering  
detail.

CONCEALED  
CASSETTE  
SYSTEM

Project	Alpolic Installation Drawings
Drawing Title	Edge Detail
Drafting by	Network Architectural